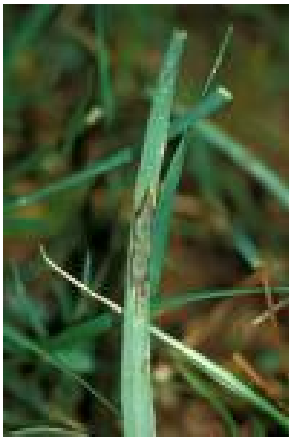


Gray leaf spot, caused by *Pyricularia grisea*, is rapidly becoming the most troublesome turfgrass disease in the United States. DNA research indicates that several strains of gray leaf spot exist. The particular strain affecting turf stands in many areas are undetermined at this time. It is imperative that ryegrass blends are genetically diverse and show excellent resistance to multiple strains!



Symptoms of Gray Leaf Spot



Gray leaf spot is first noticed as small brown spots on the leaves and stems. As it progresses, these spots expand into tan or gray spots with a dark border. In severely affected plants, the leaves may appear withered and twisted. Left unchecked, the plant may eventually die.

Disease development occurs most frequently when the temperature is between 79—84° F. Other factors that contribute to the spread of gray leaf spot are the duration of leaf wetness and high relative humidity. Warm days and nights combined with prolonged periods of wet leaves will enable the disease to spread rapidly. Over-fertilization and high levels of fertility have shown to contribute to the speed and severity of the outbreak.

How to Minimize the effects of Gray Leaf Spot

- Select a blend of gray leaf spot resistant varieties such as United Seeds 5-Iron Ryegrass Blend.
- Ask for disease resistance data from geographically diverse locations to ensure maximum resistance.
- Fertilize as needed, preferably with a controlled-release form of nitrogen.
- When conditions are optimum for a disease outbreak, apply a preventative fungicide.
- When disease conditions are at their highest, consider reducing the cutting height to aid air circulation to the canopy.
- Observe the roughs, low lying areas, and areas with poor circulation for leaf spots.
- Apply fungicides with good systemic activity upon noticing a disease outbreak.

Ask for these Gray Leaf Spot Varieties

All-Star³

SR 4600
Perennial Ryegrass

EXACTA II
PERENNIAL RYEGRASS
Gray Leaf Spot Resistant

REVENGE GLX
Perennial Ryegrass

Kokomo 99