



### Description

**Low Grow Grass/Native Wildflower Mixture** is the perfect combination of grasses and wildflowers that provide the beauty of the wildflowers accented by the aesthetics of the low growing prairie type grasses. The grasses are added to maintain an adequate environment for the wildflowers to grow and flourish and not be crowded out by unwanted weeds and grasses. The season long wildflower bloom creates the optimal environmental for all forms of wildlife. It will fully establish in 2-3 years and once established it will be extremely low maintenance.

| Botanical Name          | Common Name                     | % of Mix |
|-------------------------|---------------------------------|----------|
| Bouteloua curtipendula  | Sideoats Grama                  | 9%       |
| Bouteloua gracilis      | Blue Grama                      | 9%       |
| Festuca longifolia      | Hard Fine Fescue                | 14%      |
| Festuca ovina           | Sheep Fine Fescue               | 14%      |
| Festuca spp.            | Blue Fine Fescue                | 14%      |
| Schizachyrium scoparium | Little Bluestem                 | 14%      |
|                         | Not too Tall Wildflower Mixture | 25%      |

### Main Uses:

Conservation Areas, Low Maintenance Areas, Parks, Acreages, Waterways and Ditches

### Seeding Rate:

New Seeding (bare ground): 32 LBS per acre

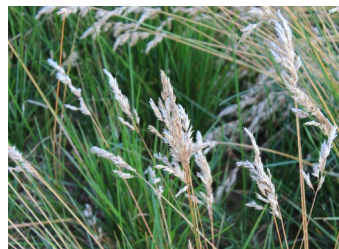
### Seeding Dates:

March– June

November-February (dormant seeding)

### Days to Germinate:

7-28 days as a Mixture



OMAHA HEADQUARTERS\_ 7500 BURLINGTON \_ OMAHA, NE 68127  
 NE TOLL FREE (800)456-9901 \_ NE LOCAL (402)-331-4800 \_ NE FAX (402)-331-1251  
 DES MOINES WAREHOUSE \_ 1800 DIXON AVE \_ DES MOINES, IA 50316  
 IA TOLL FREE (800)-365-6674 \_ IA LOCAL (515)-282-1750 \_ IA FAX (515)-266-5587

[www.unitedseeds.com](http://www.unitedseeds.com)

[www.unitedseedsonline.com](http://www.unitedseedsonline.com)

# General Seeding Guidelines



## I. SEEDING DATES

April 15 to June 15

August 10 to October 15

November 15 to February 15

## II. SITE PREPARATION FOR BAREGROUND SEEDING

- i. Conduct a soil test, per acre, to determine any needed soil amendments
- ii. Check soil PH. Ideal PH is between 6.0 and 7.0
- iii. Eliminate existing vegetation
- iv. Spray with a non-selective herbicide
- v. Remove any dead vegetation
- vi. Add soil amendments. Adjust PH.
- vii. Till soil to a 4-6 inch depth
- viii. Remove any large debris
- ix. Pulverize and lightly roll soil
- x. Apply 1 lb of Phosphorous (P) ( $2.27 \text{ lbs P}_2\text{O}_5$ ) / 1000 ft<sup>2</sup> to soil surface

## III. SITE PREPARATION FOR INTERSEEDING/OVERSEEDING

- i. Conduct one soil test, per acre, to determine any need soil amendments
- ii. Check soil PH. Ideal PH is between 6.0 and 7.0
- iii. Remove any debris that may inhibit seeding
- iv. Mow area to be seeded if existing vegetation is higher than 3-4 inches

## IV. SEEDING METHODS

Seeding Method is base on the slope and soil at site. Use broadcast, drop, slit or drill seeding methods where erosion is not a concern.

- i. Seed should be planted .125 to .25 inches below soil surface
- ii. Plant two directions putting 1/2 of seed down each direction
- iii. Gently roll or rake seeded area to ensure good soil to seed contact
- iii. If inter-seeding into existing vegetation use a slicer/inter-seeder that cuts into existing vegetation and places the seed into the soil at an optimum depth of 1/4 to 1/2 inch and achieves good soil to seed contact
- iv. If broadcast seeding into existing vegetation drag a harrow or chain link fence over seeded area to ensure seed to soil contact.

Hydro seed steep slopes or areas where erosion is a concern..

- i. Broadcast 1/2 of the seed before hydro-seed mixture is applied
- ii. Place the other 1/2 in the hydro seed mixture

## V. WATERING REQUIREMENTS

- i. Water to field capacity immediately after seeding
- ii. The first three weeks after seeding keep top 1.t inches of soil moist
- iii. Weeks four through six after seeding water 3-4 times per week
- iv. After six weeks water when grass begins to show drought stress

## VI. FERTILIZATION AND MOWING

- i. Fertilize seeded area once for the first two months with .5 lbs of N / 1000ft<sup>2</sup> after seeding
- ii. Mow when the grass is one inch longer than desired height. Do not remove more than 1/3 of grass blade.